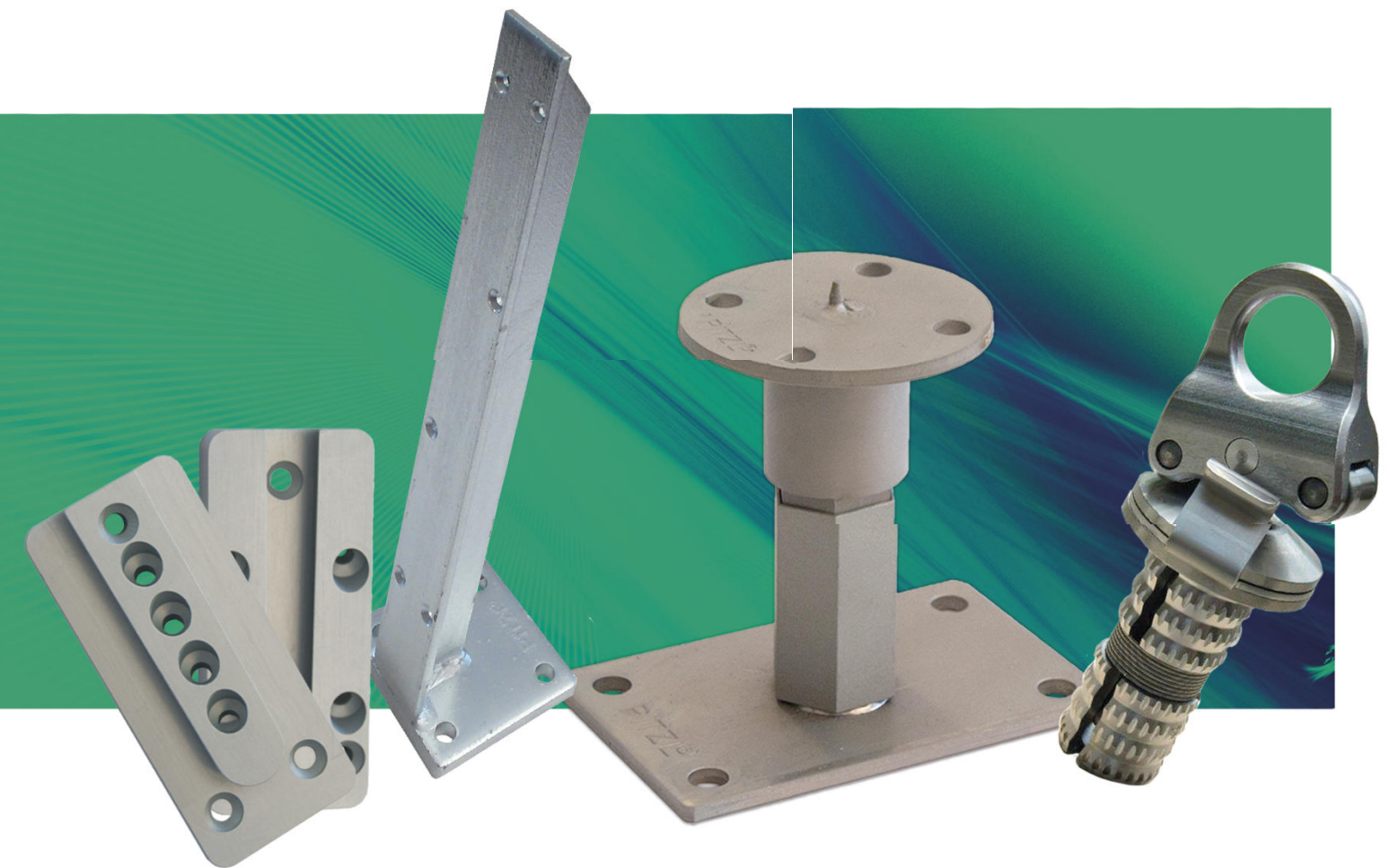


The leading supplier of complete timber connection systems



BEST SELLERS CATALOGUE





10529.1090



10521.1090



10530.1090

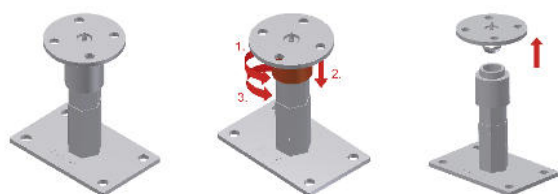


Post bases Plug-in system Z

Turn – Click, the new innovative post base system.

With few handlings, without time-consuming and inconvenient screwing the new plug-in system allows an efficient solution of assembly. Maximal load capacities in compression, traction and horizontal stresses are guaranteed through the optimal material thickness of the post base. A height adjustment is possible even when mounted and under heavy load.

| Item no. | Upper plate mm | Lower plate mm | Thread M 24 low. | Boreholes Ø 13 mm bottom | Boreholes Ø 10.5 mm top | Adjustment range mm | Version | CE |
|------------|----------------|----------------|------------------|-----------------------------|----------------------------|------------------------|-------------------------|-----------|
| 10529.1090 | Ø 96 x 8 | 160 x 100 x 8 | 90 | 4 | 4 | 141 - 201 | Centring spike | requested |
| 10521.1090 | Ø 96 x 8 | 160 x 100 x 8 | 90 | 4 | 4 | 141 - 201 | Mandrel Ø 20 x 65 mm | requested |
| 10530.1090 | Ø 96 x 8 | 160 x 100 x 8 | 90 | 4 | 4 | 141 - 201 | Tube Ø 42,4 x 70 mm | requested |



Installation instruction: The pre-assembly of the post base is already performed in the workshop and provides for a quick and comfortable work on the building site. The innovative Pitzl's plug-in system can be smoothly and fast locked and unlocked. The upper plate can with only few gestures be separated from the rest of the connector.

- Turn the fastening anticlockwise up to stop.
- Press fastening down.
- Press fastening further anticlockwise.



10930.1000



10930.1600



Post bases, System 10930

To simplify assembly still further, we have developed the 10930 item range. The upper parts have a tube diameter of 42.4 mm. They are simply inserted into the wood post and fastened with 4 fully-threaded Ø 10 x 120 mm wood screws. This saves you valuable assembly time while providing the typical values regarding compressive, tensile and transverse forces, and you can still continue to use our wood twist drill bit or your joinery machine to make the required borehole in the support. The patented upper part makes for an exceptionally wide adjustment range in the post bases of the 10 930 / 10 931 series. Of course, the upper part can also be used as a post-purlin connection. A versatile and combinable support foot, which remains height-adjustable even when mounted and under heavy load. The use of additional lock nuts increases the rigidity of the connection.

| Item no. | Upper plate in mm | Lower plate in mm | Thread, M24 low. | Thread, M24 upp. | Boreholes Ø 13 mm bottom | Boreholes Ø 12 mm top | Adjustment range, mm | Mandrel, tube Ø 42.4 mm | Special features | CE | Suitable cover sleeve item no. 10834.____ |
|------------|-------------------|-------------------|------------------|------------------|--------------------------|-----------------------|----------------------|-------------------------|------------------|----|---|
| 10930.1000 | Ø 100 x 8 | 160 x 100 x 8 | 65 | 150 | 4 | 4 | 170 - 285 | 130 | | * | .3001 |
| 10930.1600 | Ø 100 x 8 | 160 x 100 x 8 | 35 | 150 | 4 | 4 | 110 - 200 | 130 | Short version | * | .1060 |

Installation instruction: For post bases with Ø 42.4 mm tube, drill a 130 mm hole in the cross-grained wood using the Ø 42.5 mm drill (item no. 10938.00) or a joinery machine. The tube is manually inserted into the cross-grained wood and fastened with 4 fully-threaded plate screws, Ø 10 x 120 mm. No additional assembly tools required!



The upper threaded rod (M24 x 150 mm right) is screwed in through the upper plate and secured with a nut. This enables rough adjustment of 50 mm and fine adjustment of up to 65 mm following assembly via the right/left socket (complete continuous adjustability of 115 mm).

Also available: You find the corresponding assembly tools for example twist drill, shell-type milling cutter, etc. in our new catalogue Tools.



10920.1000



10921.1000



10921.1600

Post bases, Right / left threaded

A system for all applications! Threads of 20 to 30 mm and the most varied plate sizes with 6 to 15 mm material thickness - we have the perfect solution for any application (you will find M30 threads and 10 to 15 mm material thickness on page 5). Lift-off and lateral impacts can be counteracted with a straight screw connection into the cross-grained wood using fully-threaded 10 x 120 mm wood screws (with European technical approval) or a strut or lateral latches. Of course, post bases of the right/left-threaded system are still height-adjustable when mounted and under heavy load. The use of additional lock nuts increases the rigidity of the connection.

| Item no. | Upper plate in mm | Lower plate in mm | Thread, M24 low. | Thread, M24 upp. | Boreholes Ø 13 mm bottom | Boreholes Ø 12 mm top | Adjustment range, mm | CE | Suitable cover sleeve item no. 10834._____ |
|------------|-------------------|-------------------|------------------|------------------|--------------------------|-----------------------|----------------------|----|--|
| 10920.1000 | 100 x 100 x 6 | 160 x 100 x 6 | 65 | 65 | 4 | 4 | 142 - 207 | * | .2000 |

| Item no. | Upper plate in mm | Lower plate in mm | Thread, M24 low. | Thread, M24 upp. | Borehole Ø 13 mm bottom | Borehole Ø 12 mm top | Adjustment range, mm | Special features | CE | Suitable cover sleeve item no. 10834._____ |
|------------|-------------------|-------------------|------------------|------------------|-------------------------|----------------------|----------------------|------------------|----|--|
| 10921.1000 | Ø 100 x 6 | 160 x 100 x 6 | 65 | 65 | 4 | 4 | 142 - 207 | | * | .2000 |
| 10921.1600 | Ø 100 x 6 | 160 x 100 x 6 | 35 | 35 | 4 | 4 | 82 - 92 | short version | * | .1060 |

For lateral fixation, the mandrel M24 x 110 mm is inserted into the timber column.



10921.1006



10930.1006

11008.2160
11008.2250

Post bases, Heavy-duty version

The in-house fabrication provides Pitzl to react fast and flexible to customers requests. Because of snow quantities that disproportionally fell in large parts of Europe it was necessary to develop and manufacture quickly a fitted post base.

The optimally designed constructive form allows very high load capacities for compression up to 381 kN and also for horizontal load actions up to 31.7 kN. The tried and trusted Pitzl screw connection concept or a strut with dowel boreholes guarantee a lift-off value up to 38.8 kN.

More detailed information can be found in our statics manual.

| Item no. | Upper plate in mm | Lower plate in mm | Thread, M30 low. | Thread, M30 upp. | Boreholes Ø 15 mm bottom | Boreholes Ø 12 mm top | Adjustment range, mm | CE | Suitable cover sleeve item no. 10833.____ |
|------------|-------------------|-------------------|------------------|------------------|-----------------------------|--------------------------|-------------------------|----|---|
| 10921.1006 | 100 x 100 x 15 | 160 x 100 x 15 | 65 | 65 | 4 | 4 | 160 - 220 | * | .2000 |

For lateral fixation, the mandrel M30 x 110 mm is inserted into the timber column.

| Item no. | Upper plate in mm | Lower plate in mm | Thread, M30 low. | Thread, M30 upp. | Boreholes Ø 15 mm bottom | Boreholes Ø 12 mm top | Adjustment range, mm | Mandrel, tube Ø 42.4 mm | CE | Suitable cover sleeve item no. 10833.____ |
|------------|-------------------|-------------------|------------------|------------------|-----------------------------|--------------------------|----------------------|----------------------------|----|---|
| 10930.1006 | 100 x 100 x 15 | 160 x 100 x 15 | 65 | 150 | 4 | 4 | 205 - 300 | 130 | * | .3000 |

With tube.

| Item no. | Upper plate in mm | Lower plate in mm | Height in mm | Tube Ø in mm | Boreholes Ø 17 mm bottom | Boreholes Ø 17 mm top | CE |
|------------|-------------------|-------------------|--------------|--------------|-----------------------------|--------------------------|-----------|
| 11008.2160 | 140 x 140 x 15 | 140 x 140 x 15 | 160 | 82,5 x 5 | 4 | 4 | requested |
| 11008.2250 | 140 x 140 x 15 | 140 x 140 x 15 | 250 | 82,5 x 5 | 4 | 4 | requested |

With strut 120 x 140 x 10 with 2 boreholes Ø 13 mm.



11009.0180



11009.0100



11009.1100



11013.0100



11013.1200




11013.1300

Post bases, Threaded rods

Designed for compressive, tensile and transverse forces

| Item no. | Upper plate in mm | Lower plate in mm | Thread M20 mm | Thread M24 mm | Boreholes Ø 13 mm bottom | Boreholes Ø 12 mm bottom | Boreholes Ø 12 mm top | CE |
|------------|-------------------|-------------------|---------------|---------------|-----------------------------|-----------------------------|--------------------------|----|
| 11009.0180 | 80 x 80 x 5 | 100 x 100 x 6 | 150 | | | 4 | 4 | |
| 11009.0100 | 100 x 100 x 6 | 100 x 100 x 6 | 150 | | | 4 | 4 | |
| 11009.1100 | 100 x 100 x 6 | 160 x 100 x 6 | 150 | | 4 | | 4 | |
| 11013.0100 | 100 x 100 x 6 | 100 x 100 x 6 | | 150 | | 4 | 4 | |
| 11013.1200 | 100 x 100 x 6 | 160 x 100 x 6 | | 250 | 4 | | 4 | * |
| 11013.1300 | 100 x 100 x 6 | 160 x 100 x 6 | | 330 | 4 | | 4 | * |

Installation instruction: - The post base is fastened to the cross-grained wood with fully threaded plate screws, 10 x 120 mm.
 - The lift-off value can be increased by increasing the effective thread length. Please refer to our design manual for the formula.
 - Fasten to foundation with tie bolts, Multi Monti etc. (must be certified separately).

Also available: You find the corresponding assembly tools for example twist drill, shell-type milling cutter, etc. in our new catalogue Tools.

- Lift-off protection either by welding the adjusting nut to the upper plate (order example: 11013.1201) or alternatively with a locking latch (order example: 11013.1202).





11041.0000



11044.0071



11046.0000

Post bases, hot-dip galvanized

Support bracket

| Item no. | Dimensions mm | Support height mm | Boreholes Ø 12 mm | Oblong hole Ø 11 x 22 |
|------------|-------------------|-------------------|-------------------|-----------------------|
| 11041.0000 | 85 x 200 x 80 x 6 | 65 | 4 | 2 |

Post bases for fence posts

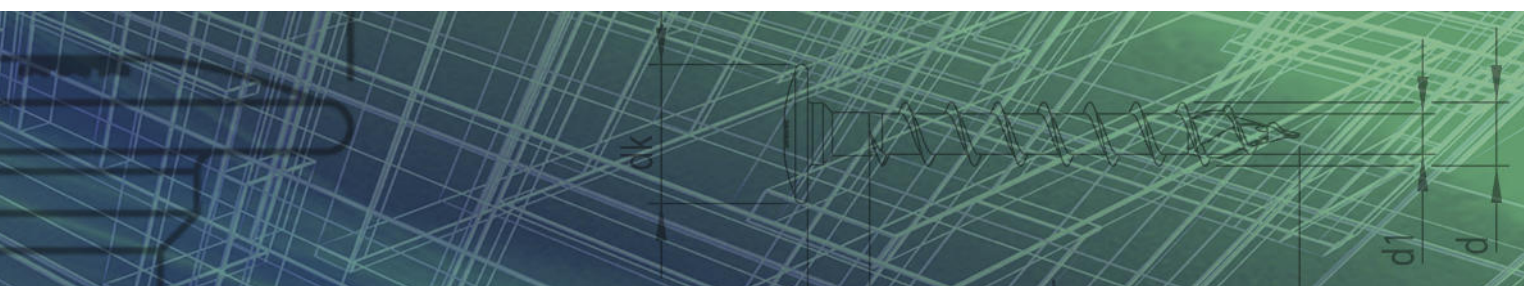
heavy-duty version

| Item no. | Clearance mm | Ground plate mm | Latches mm | Boreholes Ø 11 mm |
|------------|--------------|-----------------|--------------|-------------------|
| 11044.0071 | 71 | 60 x 8 x 210 | 60 x 6 x 200 | 8 |
| 11044.0091 | 91 | 60 x 8 x 210 | 60 x 6 x 200 | 8 |

Post anchor Atlas

2 parts, for doweling

| Item no. | Material mm | Total height mm | Support height mm | Minimum wood thickness mm | Borehole Ø 11 mm (per bracket) |
|------------|-------------|-----------------|-------------------|---------------------------|--------------------------------|
| 11046.0000 | 60 x 5 | 139 | 33 | 40 | 5 |





31105.0000



31210.0000



31102.0000



31253.0000

Balcony posts T - iron, galvanized

| Item no. | Bottom plate mm | Height mm | Boreholes Ø 12 mm bottom | T-iron mm | Boreholes Ø 6.5 mm |
|------------|-----------------|-----------|--------------------------|-------------|--------------------|
| 31105.0000 | 100 x 100 x 10 | 400 | 4 | 45 x 45 x 5 | 6 |

Balcony posts C - profile, hot-dip galvanized

| Item no. | Bottom plate mm | Height mm | C-profile | Oblong boreholes Ø 13 x 26 mm |
|------------|-----------------|-----------|------------------|-------------------------------|
| 31210.0000 | 160 x 100 x 10 | 1000 | 50 x 30 x 15 x 3 | 2 |

For front-side doweling, including a plastic cap and two aluminium clip latches 160 x 40 x 5.

Balcony posts with square tube 30 x 30 x 2 mm, hot-dip galvanized

| Item no. | Bottom plate mm | Height mm | Tube mm | Oblong boreholes Ø 13 x 26 mm |
|------------|-----------------|-----------|-------------|-------------------------------|
| 31102.0000 | 180 x 60 x 10 | 1000 | 30 x 30 x 2 | 2 |

For doweling, incl. a plastic cap.

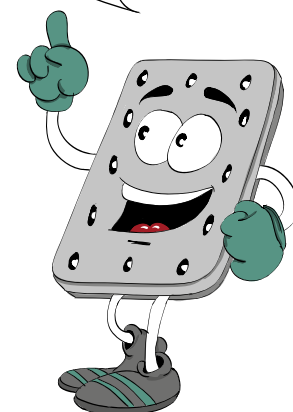
Balcony posts with rectangular tube 50 x 30 x 2 mm, hot-dip galvanized

| Item no. | Bottom plate mm | Height mm | Tube mm | Oblong boreholes Ø 13 x 26 mm |
|------------|-----------------|-----------|-------------|-------------------------------|
| 31253.0000 | 160 x 100 x 10 | 1000 | 50 x 30 x 2 | 2 |

For front-side doweling, incl. a plastic cap.



Alternatively the Pitzl HVP series 88004.0000 to 88322.0000 can be ordered with uplift-protection.



Connectors HVP

Wood-to-wood connections

Optimal distances to the edges and variable screws length ensure accuracy of fit for each timber section.

| Item no. | Dimensions w x h x d (mm) | Number of screws | Screws size | Minimal timber section with screws Ø 4.5 x 50 (mm) | | Characteristic load capacity* | | Packing unit | CE |
|------------|------------------------------|---------------------|-----------------|---|------------|-------------------------------|------------|--------------|----|
| | | | | Header | Joist | Ø 4.5 x 50 | Ø 4.5 x 80 | | |
| 88004.0000 | 25 x 40 x 12 | 6 | Ø 4.5 x 50 - 80 | 60 x 50 | 45 x 50 | 2.42 | 3.78 | 20 | * |
| 88006.0000 | 25 x 60 x 12 | 8 | Ø 4.5 x 50 - 80 | 60 x 70 | 45 x 70 | 4.83 | 7.56 | 20 | * |
| 88008.0000 | 25 x 80 x 12 | 10 | Ø 4.5 x 50 - 80 | 60 x 90 | 45 x 90 | 7.25 | 11.3 | 20 | * |
| 88010.0000 | 25 x 100 x 12 | 12 | Ø 4.5 x 50 - 80 | 60 x 110 | 45 x 110 | 9.66 | 15.1 | 20 | * |
| 88107.0000 | 40 x 70 x 12 | 10 | Ø 4.5 x 50 - 80 | 60 x 80 | 50** x 80 | 7.25 | 11.3 | 10 | * |
| 88109.0000 | 40 x 90 x 12 | 14 | Ø 4.5 x 50 - 80 | 60 x 100 | 50** x 100 | 9.66 | 15.1 | 10 | * |
| 88111.0000 | 40 x 110 x 12 | 16 | Ø 4.5 x 50 - 80 | 60 x 120 | 50** x 120 | 12.1 | 18.9 | 10 | * |
| 88113.0000 | 40 x 130 x 12 | 18 | Ø 4.5 x 50 - 80 | 60 x 140 | 50** x 140 | 14.5 | 22.7 | 10 | * |
| 88115.0000 | 40 x 150 x 12 | 22 | Ø 4.5 x 50 - 80 | 60 x 160 | 50** x 160 | 19.3 | 30.2 | 10 | * |

*F_{2,Rk} (kN) for GL24h with fully threaded screws: Ø 4.5 x 50 with effective thread length of 45 mm and Ø 4.5 x 80 with effective thread length of 74 mm.

For other screws and thread lengths or wood based materials: cf. design manual.

** Valid for part 2 (with the tongue) fixed at the end grain, otherwise 60 mm.

| Item no. | Dimensions w x h x d (mm) | Number of screws | Screws size | Minimal timber section with screws Ø 5 x 60 (mm) | | Characteristic load capacity* | | Packing unit | CE |
|------------|------------------------------|---------------------|----------------|---|-----------|-------------------------------|-----------|--------------|----|
| | | | | Header | Joist | Ø 5 x 60 | Ø 5 x 100 | | |
| 88210.0000 | 60 x 100 x 12 | 18 | Ø 5 x 60 - 100 | 70 x 120 | 80 x 120 | 19.6 | 32.3 | 10 | * |
| 88214.0000 | 60 x 140 x 12 | 24 | Ø 5 x 60 - 100 | 70 x 160 | 80 x 160 | 31.4 | 51.7 | 10 | * |
| 88318.0000 | 80 x 180 x 12 | 34 | Ø 5 x 60 - 100 | 70 x 200 | 100 x 200 | 47.1 | 77.5 | 10 | * |
| 88322.0000 | 80 x 220 x 12 | 44 | Ø 5 x 60 - 100 | 70 x 240 | 100 x 240 | 62.7 | 103.3 | 10 | * |

*F_{2,Rk} (kN) for GL24h with fully threaded screws: Ø 5 x 60 with effective thread length of 54 mm and Ø 5 x 100 with effective thread length of 94 mm.

For other screws and thread lengths or wood based materials: cf. design manual.



88420.0000



88430.0000



88445.0000



Connectors Heavy-duty HVP

The new disposed inclined drilled holes as well as the possibility of using different screws lengths guarantee the adaptability to the small timber cross-sections too.

| Item no. | Dimensions w x h x d (mm) | Number of screws | Screws size | Minimal timber section with screws Ø 8 x 160 (mm) | | Characteristic load capacity* | | Packing unit | CE |
|------------|------------------------------|---------------------|-----------------|--|-----------|-------------------------------|-----------|--------------|----|
| | | | | Header | Joist | Ø 8 x 160 | Ø 8 x 200 | | |
| 88420.0000 | 120 x 200 x 20 | 16 | Ø 8 x 100 - 200 | 160 x 220 | 140 x 220 | 49.8 | 61.6 | 4 | * |
| 88425.0000 | 120 x 250 x 20 | 20 | Ø 8 x 100 - 200 | 160 x 270 | 140 x 270 | 74.6 | 92.3 | 4 | * |
| 88430.0000 | 120 x 300 x 20 | 24 | Ø 8 x 100 - 200 | 160 x 320 | 140 x 320 | 99.5 | 123.1 | 4 | * |
| 88435.0000 | 120 x 350 x 20 | 28 | Ø 8 x 100 - 200 | 160 x 370 | 140 x 370 | 124.4 | 153.9 | 4 | * |
| 88440.0000 | 120 x 400 x 20 | 32 | Ø 8 x 100 - 200 | 170 x 420 | 140 x 420 | 149.3 | 184.7 | 4 | * |
| 88445.0000 | 120 x 450 x 20 | 36 | Ø 8 x 100 - 200 | 170 x 470 | 140 x 470 | 174.2 | 215.5 | 4 | * |
| 88450.0000 | 120 x 500 x 20 | 40 | Ø 8 x 100 - 200 | 170 x 520 | 140 x 520 | 199.1 | 246.2 | 4 | * |
| 88455.0000 | 120 x 550 x 20 | 44 | Ø 8 x 100 - 200 | 170 x 570 | 140 x 570 | 223.9 | 277.0 | 4 | * |
| 88460.0000 | 120 x 600 x 20 | 48 | Ø 8 x 100 - 200 | 170 x 620 | 140 x 620 | 248.8 | 307.8 | 4 | * |

*F_{2,Rk} (kN) for GL24h with fully threaded screws: Ø 8 x 160 with effective thread length of 150 mm and Ø 8 x 200 with effective thread length of 190 mm.

For other screws and thread lengths or wood based materials: cf. design manual.

Heavy-duty HVP connectors are automatically delivered with uplift protection (2 screws Ø 6 x 20 mm and flat steel for uplift protection included).



88560.0000



The heavy-duty HVP of the series 885 with a width of 140 mm are optimally suitable for wide beams (from 170 mm) under very high loads.

Available on pre-order.

| Item no. | Dimensions w x h x d (mm) | Number of screws | Screws size | Minimal timber section with screws Ø 8 x 160 (mm) | | Characteristic load capacity* | | Packing unit | CE |
|------------|------------------------------|---------------------|-----------------|--|-----------|-------------------------------|-----------|--------------|----|
| | | | | Header | Joist | Ø 8 x 160 | Ø 8 x 200 | | |
| 88540.0000 | 140 x 400 x 20 | 40 | Ø 8 x 100 - 200 | 170 x 420 | 170 x 420 | 199.1 | 246.2 | 4 | * |
| 88545.0000 | 140 x 450 x 20 | 48 | Ø 8 x 100 - 200 | 170 x 470 | 170 x 470 | 248.8 | 307.8 | 4 | * |
| 88550.0000 | 140 x 500 x 20 | 52 | Ø 8 x 100 - 200 | 170 x 520 | 170 x 520 | 273.7 | 338.6 | 4 | * |
| 88555.0000 | 140 x 550 x 20 | 56 | Ø 8 x 100 - 200 | 170 x 570 | 170 x 570 | 298.6 | 369.4 | 4 | * |
| 88560.0000 | 140 x 600 x 20 | 64 | Ø 8 x 100 - 200 | 170 x 620 | 170 x 620 | 348.4 | 430.9 | 4 | * |

*F_{2,Rk} (kN) for GL24h with fully threaded screws: Ø 8 x 160 with effective thread length of 150 mm and Ø 8 x 200 with effective thread length of 190 mm.

For other screws and thread lengths or wood based materials: cf. design manual.

Heavy-duty HVP connectors are automatically delivered with uplift protection (2 screws Ø 6 x 20 mm and flat steel for uplift protection included).



Video

www.pitzl-connectors.com/videos/



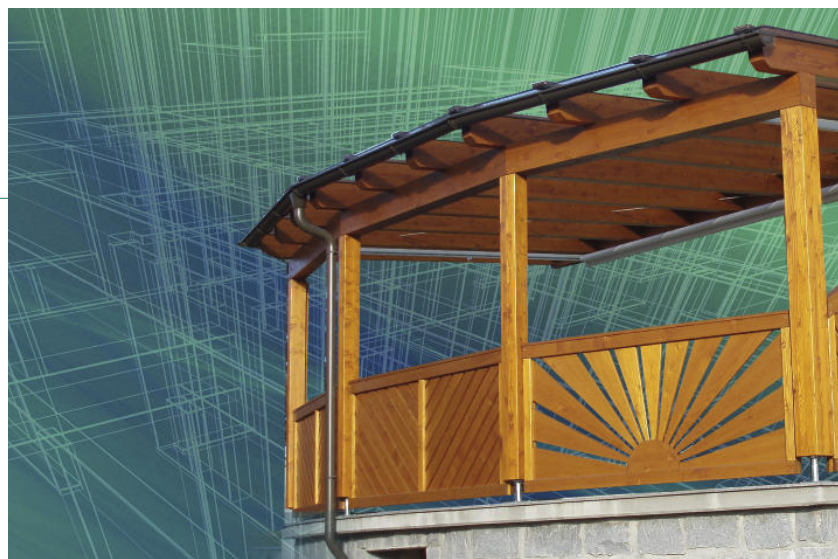
Datasheet

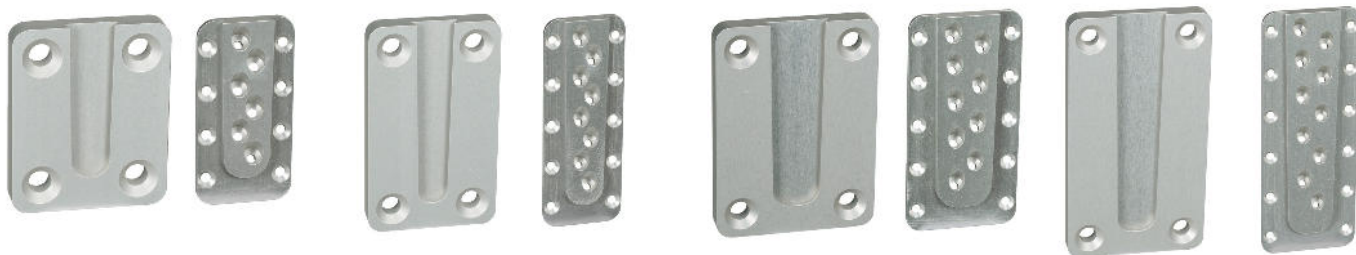
www.pitzl-connectors.com/produkte/verbinder/cat/schwerlast-hvp/



Downloads

www.pitzl-connectors.com/downloads/





Connectors HVP for steel or concrete connections

Standard HVP connectors

Equally sturdy and simple HVP connection to concrete or steel up to about 300 kN. An anchor plate with concrete anchors ensures that the forces are applied properly into the concrete element. The secondary joist connection is realised with a normal HVP connector part.

| Item no. | Width (mm) | | Connector height (mm) | Total thickness (mm) | Screws Joist (Wood) | Number of anchors Header (Concrete) | Minimal timber section with screws Ø 5 x 60 (mm) | Packing unit | CE |
|------------|-------------|--------------|-----------------------|----------------------|-----------------------|-------------------------------------|--|--------------|----|
| | Joist plate | Header plate | | | | | | | |
| 88210.3000 | 60 | 90 | 100 | 18 | 9 pc. Ø 5 x 60 - 100 | 4 | 80 x 120 | 4 | * |
| 88214.3000 | 60 | 90 | 140 | 18 | 12 pc. 5 x 60 - 100 | 4 | 80 x 160 | 4 | * |
| 88318.3000 | 80 | 110 | 180 | 18 | 17 pc. Ø 5 x 60 - 100 | 4 | 100 x 200 | 4 | * |
| 88322.3000 | 80 | 110 | 220 | 18 | 22 pc. Ø 5 x 60 - 100 | 4 | 100 x 240 | 4 | * |

Remark: Characteristic load capacity wood part: cf. Wood-to-wood connections. The load capacity of the concrete part (anchor and concrete) must be verified separately.

Standard HVP connectors for steel or concrete connection are automatically delivered with uplift protection (2 screws Ø 5 x 20 mm and flat steel for uplift protection included).

Heavy-duty HVP connectors

| Item no. | Width (mm) | | Connector height (mm) | Total thickness (mm) | Screws Joist (Wood) | Number of anchors Header (Concrete) | Minimal timber section with screws Ø 8 x 160 (mm) | Packing unit | CE |
|------------|-------------|--------------|-----------------------|----------------------|------------------------|-------------------------------------|---|--------------|----|
| | Joist plate | Header plate | | | | | | | |
| 88420.3000 | 120 | 150 | 200 | 25 | 8 pc. Ø 8 x 100 - 200 | 4 | 140 x 220 | 4 | * |
| 88430.3000 | 120 | 150 | 300 | 25 | 12 pc. Ø 8 x 100 - 200 | 4 | 140 x 320 | 4 | * |
| 88440.3000 | 120 | 150 | 400 | 25 | 16 pc. Ø 8 x 100 - 200 | 4 | 140 x 420 | 4 | * |
| 88450.3000 | 120 | 150 | 500 | 25 | 20 pc. Ø 8 x 100 - 200 | 6 | 140 x 520 | 4 | * |
| 88460.3000 | 120 | 150 | 600 | 25 | 24 pc. Ø 8 x 100 - 200 | 6 | 140 x 620 | 4 | * |

Remark: Characteristic load capacity wood part: cf. Wood-to-wood connections. The load capacity of the concrete part (anchor and concrete) must be verified separately.

Please note: Items no. 88450.3000 and 88460.3000 are not in stock and need to be pre-ordered!

Heavy-duty HVP connectors for steel or concrete connection are automatically delivered with uplift protection (2 screws Ø 6 x 20 mm and flat steel for uplift protection included).



88435.2000

Connectors Double HVP

Standard double HVP connectors

Available on pre-order.

| Item no. | Dimensions w x h x d (mm) | Number of screws | Screws size | Minimal timber section with screws Ø 5 x 60 (mm) | | Characteristic load capacity* | | Packing unit | CE |
|------------|------------------------------|---------------------|----------------|---|-----------|-------------------------------|-----------|--------------|----|
| | | | | Header | Joist | Ø 5 x 60 | Ø 5 x 100 | | |
| 88210.2000 | 120 x 100 x 12 | 32 | Ø 5 x 60 - 100 | 70 x 120 | 140 x 120 | 39.2 | 64.6 | 4 | * |
| 88214.2000 | 120 x 140 x 12 | 44 | Ø 5 x 60 - 100 | 70 x 160 | 140 x 160 | 62.7 | 103.3 | 4 | * |
| 88318.2000 | 160 x 180 x 12 | 64 | Ø 5 x 60 - 100 | 70 x 200 | 180 x 200 | 94.2 | 155.0 | 4 | * |
| 88322.2000 | 160 x 220 x 12 | 84 | Ø 5 x 60 - 100 | 70 x 240 | 180 x 240 | 125.5 | 206.7 | 4 | * |

*F_{2,Rk} (kN) for GL24h with fully threaded screws: Ø 5 x 60 with effective thread length of 54 mm and Ø 5 x 100 with effective thread length of 94 mm.

For other screws and thread lengths or wood based materials: cf. design manual.

Standard double HVP connectors are automatically delivered with uplift protection (2 screws Ø 5 x 20 mm and flat steel for uplift protection included).

Heavy-duty double HVP connectors

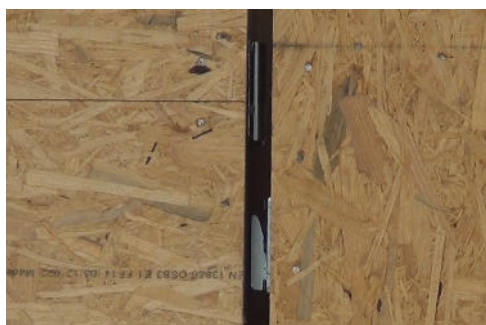
Available on pre-order.

| Item no. | Dimensions w x h x d (mm) | Number of screws | Screws size | Minimal timber section with screws Ø 8 x 160 (mm) | | Characteristic load capacity* | | Packing unit | CE |
|------------|------------------------------|---------------------|-----------------|--|-----------|-------------------------------|-----------|--------------|----|
| | | | | Header | Joist | Ø 8 x 160 | Ø 8 x 200 | | |
| 88420.2000 | 240 x 200 x 20 | 28 | Ø 8 x 100 - 200 | 160 x 220 | 260 x 220 | 99.5 | 123.1 | 4 | * |
| 88425.2000 | 240 x 250 x 20 | 36 | Ø 8 x 100 - 200 | 160 x 270 | 260 x 270 | 149.3 | 184.7 | 4 | * |
| 88430.2000 | 240 x 300 x 20 | 44 | Ø 8 x 100 - 200 | 160 x 320 | 260 x 320 | 199.1 | 246.2 | 4 | * |
| 88435.2000 | 240 x 350 x 20 | 52 | Ø 8 x 100 - 200 | 160 x 370 | 260 x 370 | 248.8 | 307.8 | 4 | * |
| 88440.2000 | 240 x 400 x 20 | 60 | Ø 8 x 100 - 200 | 170 x 420 | 260 x 420 | 298.6 | 369.4 | 4 | * |
| 88445.2000 | 240 x 450 x 20 | 68 | Ø 8 x 100 - 200 | 170 x 470 | 260 x 470 | 348.4 | 430.9 | 4 | * |
| 88450.2000 | 240 x 500 x 20 | 76 | Ø 8 x 100 - 200 | 170 x 520 | 260 x 520 | 398.1 | 492.5 | 4 | * |
| 88455.2000 | 240 x 550 x 20 | 84 | Ø 8 x 100 - 200 | 170 x 570 | 260 x 570 | 447.9 | 554.1 | 4 | * |
| 88460.2000 | 240 x 600 x 20 | 92 | Ø 8 x 100 - 200 | 170 x 620 | 260 x 620 | 497.6 | 615.6 | 4 | * |

*F_{2,Rk} (kN) for GL24h with fully threaded screws: Ø 8 x 160 with effective thread length of 150 mm and Ø 8 x 200 with effective thread length of 190 mm.

For other screws and thread lengths or wood based materials: cf. design manual.

Heavy-duty double HVP connectors are automatically delivered with uplift protection (2 screws Ø 6 x 20 mm and flat steel for uplift protection included).



88630.0000

Application example



88060.0000

Step connectors SVP

Stepped connectors anodised

Connectors with multiple applications for staircase construction. Elegant visual design and high load-carrying capacities provide a clean and functional connecting option for the precise and fast assembly of wooden steps. A countersunk head screw DIN 7991 M5 x 25 mm is included in the scope of delivery.

| Item no. | Height mm | Width mm | Depth in mm | Design value | Drilled holes Ø 4.7 mm |
|------------|-----------|----------|-------------|--------------|------------------------|
| 88630.0000 | 30 | 40 | 26 | about 1.7 kN | 8 |

Wall connectors WVP

Wall connectors

The ideal connection for prefabricated wood wall elements - easy, quick and cost-effective.

When combined with solid workmanship, our wall connectors ensure high resilience (static values are available).

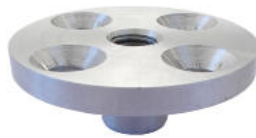
Easy handling implies important savings for the user - thanks either to quick and easy assembly on site or to pre-assembly in the workshop. Material: S355 galvanised

| Item no. | Base plate with suspension hook in mm | Boreholes Ø 6.5 mm | Anchor plate with recess for hook in mm | Boreholes Ø 6.5 mm | Overall thickness when combined in mm | Characteristic value* traction | Characteristic value* shearing to the side |
|------------|---------------------------------------|--------------------|---|--------------------|---------------------------------------|--------------------------------|--|
| 88060.0000 | 60 x 80 x 5 | 6 | 60 x 80 x 3 | 4 | 19 | 9.6 kN | 11.4 kN |

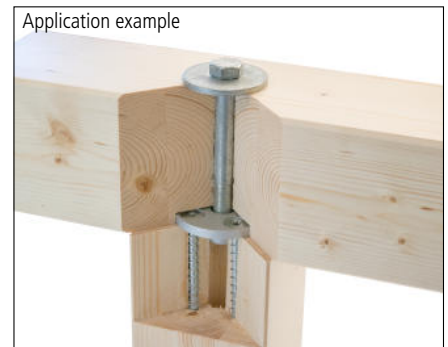
*tested with fully threaded screws Spax 6 x 60 mm.



88716.0000



88715.0000



SPP post-purlin connectors

You need stabile and reliable connections that you can process as well as re-stress in a quick and precise way.

The Pitzl SPP connectors ensure a perfect hold.

SPP post-purlin connectors - the ideal solution for tensile connections or wood connections with combined load types, such as post-purlin connections. SPP is a retensionable wood connection that can be loosened and removed without problems. According to the ETA, a straight screw connection is permitted even in cross-grained wood. This makes it possible to increase the tensile load-carrying capacity by increasing the effective thread length at the wood screw. Dimensioning details can be found in the Pitzl Design Manual at www.pitzl-connectors.com.

Advantages of the SPP connectors

- Easy and precisely fitting process
- Problem-free disassembly
- Can be re-stressed
- Usable at the end grain too

| Item no. | Upper plate mm | Boreholes Ø 12 mm, countersunk | Tube mm | Core thread | Minimal timber dimensions mm | Material | CE |
|------------|----------------|--------------------------------|-------------|-------------|------------------------------|--------------------|----|
| 88716.0000 | Ø 100 x 6 | 4 | Ø 42.4 x 70 | M 16 | | zinc plated steel | * |
| 88715.0000 | Ø 80 x 8 | | Ø 24 x 20 | | 90 x 90 | anodised aluminium | |

58000.0000



58400.0000



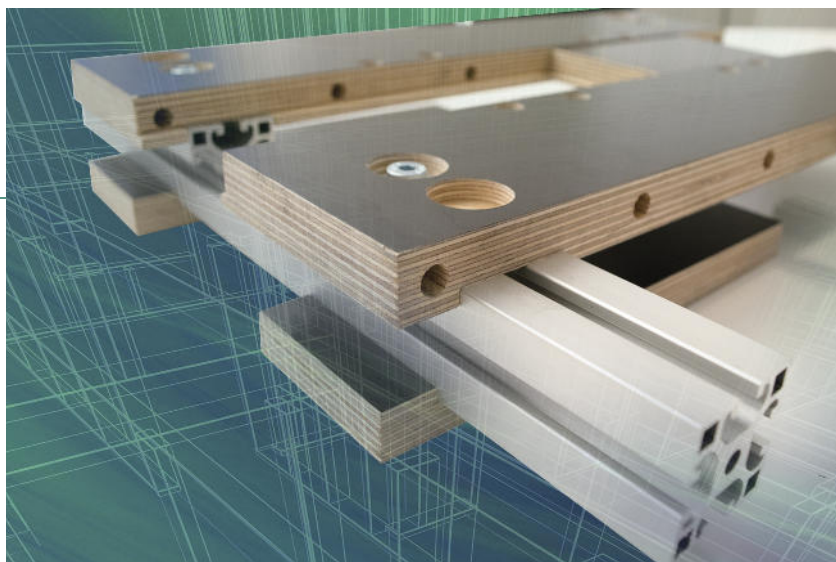
Milling and assembly templates

Milling and assembly templates for all connector sizes of HVP series.

The flexible and easily adjustable templates enable a quick adjustment of connector width.

Following correct adjustment, milling and assembly works can begin without any further adaptation being required.

| Item no. | Connector width | Suitable for connector sizes item no. |
|------------|-----------------|---------------------------------------|
| 58000.0000 | 25 - 80 mm | 88004.0000 - 88322.0000 |
| 58400.0000 | 100 - 140 mm | 88420.0000 - 88560.0000 |





55650.0000



55650.1000



55650.2000

Wall support

3 parts, electroplated, fine adjustment via left/right thread, tube 45 x 45 mm

| Item no. | Adjustment range mm | Thread | Weight |
|------------|---------------------|--------|---------|
| 55650.0000 | 1600 - 4200 | M 20 | 12.5 kg |

Indication: Calculation software available on request.

Distance piece

from tube 40 x 40 x 2 x 1265 mm for optimum alignment of the wall elements

| Item no. |
|------------|
| 55650.1000 |

Lever

for easier adjustment of the wall support

| Item no. |
|------------|
| 55650.2000 |





Both beam pullers are delivered with our high quality transport box.

Beam puller with turn-adaptor

Fix, tighten, done!

Convenient work

Lay the turn-adaptor on the object and screw. Differently arranged boreholes allow a smoothly fastening on timber or masonry. The mounted to the adaptor butt strap serves for the fastening in grooves or to edges.

Therefore Pitzl beam puller provides a perfect stability for the processing of solid wood elements, alveolar elements and wood soft fiber elements.

| Item no. | Span mm | Boreholes Ø 8 mm | Max. load capacity |
|------------|-----------|------------------|--------------------|
| 55850.0000 | 560 - 720 | 16 | 20 kN |

Advantages

- Can be fixed everywhere
- Slight damage of timber
- Easy handling
- Fastening in every angles

Beam puller with hooks

Fix, tighten, ready!

| Item no. | Span mm | Boreholes Ø 8 mm | Max. load capacity |
|------------|-----------|------------------|--------------------|
| 55851.0000 | 600 - 760 | 2 | 20 kN |

Advantages

- Through the additional bore fastening by one screw is possible.
- Special Pitzl hooks for easy and non destructive removal.

Easy setup for gentle and precise processing of wooden surfaces and wooden beams.

Both timber puller ratchets allow quick switch between different tool attachments.

Accessories

| Item no. | Description |
|------------|---|
| 55850.1000 | Hook |
| 55850.2000 | Bracing strip tensioner 1 - 8 mm |
| 55850.2100 | Adapter ring for bracing strip tensioner 55850.2000 |





55860.0000



55865.0000



Lifting clamps PowerClamp II D40/90

The lifting clamps - the latest innovation in timber construction.

Enables you easily to raise wooden beams and massive edge glued panels through a simple and quick fastening of the lifting clamps.

Drill, apply, lift!

Advantages of PowerClamp II D40/90

- Major time savings
- No other lifting gear needed
- No damage of wood surface
- No soiling

Scope of supply

- 2x PowerClamp II D40/90
- 1x Drill (40 mm)
- 1x High quality transport box

With a load capacity of up to 1000 kg per clamp the low-maintenance lifting clamp PowerClamp II D40/90 is your optimal partner for each construction project. Despite the low weight of handy 1.8 kg (per clamp) it is extremely robust.

Application

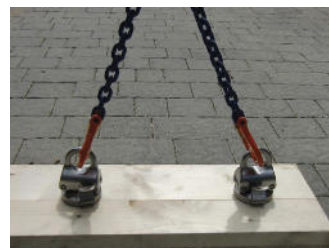
Application is easy as can be. A drill-hole size of just 40 mm is sufficient. Insert the clamps and you can already effortlessly lift the structural element.

Item no.

55860.0000

Accessories

| Item no. | Description | Ø mm | Working length mm | Overall length mm |
|------------|------------------------|------|-------------------|-------------------|
| 55865.0000 | Twist drill „Spur Bit“ | 40 | 90 | 150 |





Fast, simple and precise: for the best result

- Wood connectors
- Post bases
- Balcony posts / fence posts
- Tools / accessories
- always up to date with www.pitzl-connectors.com



Manufacturer:

Pitzl Metallbau GmbH & Co. KG
Siemensstraße 26
84051 Altheim - Germany
Tel.: +49 8703 9346-0
Telefax: +49 8703 9346-55
Email: info@pitzl-connectors.com
www.pitzl-connectors.com

We recommend our distributor:



APTUS
FASTENER SYSTEMS
innovations in fastenings and fixings

T : +44(0) 1773 740 410
F : +44(0) 1773 740 417
e : sales@aptusfasteners.co.uk
w : www.aptusfasteners.co.uk

Aptus Fastener Systems UK Ltd
Salterwood Drive
Denby Hall Business Park
Denby, Derbyshire
DE5 8JY



ETA-11/0295 ETA-10/0413

For more information and technical details, downloads and helpful video tutorials: www.pitzl-connectors.com.
Alternatively, our competent staff are always available for advice: +49 8703 9346-0.